

## LA PLAYA COOPERATIVE NURSERY SCHOOL

La Playa is a parent-run, nonprofit, cooperative nursery school for children from ages 2 1/2 through 5 years of age.

Starting as a play group in 1938, La Playa moved to its current location and was licensed as a Nursery School in 1948.

La Playa's philosophy focuses on fostering the children's self-esteem, confidence and social skills through a developmental curriculum.

La Playa provides a nurturing environment that allows children to actively explore the world at their own level and pace.



### La Playa offers:

- Fully credentialed teaching staff
- A half day program in which parents participate one day a week
- Spacious indoor facilities and a huge, walled-in yard with grass, trees, bike path, and play area all located in Culver City's Lindberg Park
- Lots of child-directed free play in a variety of learning centers
- Group gathering for snack, circle time, and lunch
- Huge selection of books and educational toys
- Highly creative and child-directed art program, music and science projects

## The La Playa Philosophy

We will provide our children with an opportunity to be themselves and develop at their own rate, express themselves through art and play materials, to learn to be tolerant, creative and imaginative, to learn to be independent, able to solve their own problems and do things for themselves; to learn to establish close relationships with adults other than their family, to learn limits of behavior regarding safety, health, and respect for others, to build feelings of self-confidence and security, to extend and enrich their understanding of the world, to increase their ability to handle their emotions constructively and to enjoy a preschool experience that will simplify the transition to elementary school and other social situations.

The parents will be given an opportunity to share their child's first experience away from home, become more aware of their child's world and understand their behavior based on knowledge of growth and development, to achieve a more positive approach to our child-adult relationship through professional guidance and shared experience with other parents, to appreciate and accept one another for who we are.



*"La Playa provides a fun, enriching environment where children learn as they play – come play with us!"*

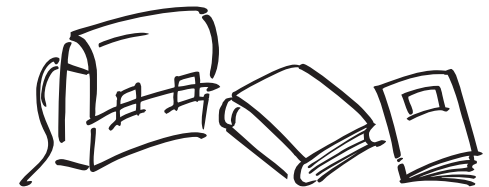
**Ruth Hollensteiner, Director**

## The Benefits of a CO-OP School:

- You're actively contributing to your child's education
- You'll know your child's strengths and weaknesses by seeing what they're experiencing. Your child will learn to interact with many adults and children of different ages
- You'll have a built-in support system by getting to know the kids and their parents

### The requirements for La Playa Parents:

- Regular assistance in teaching at the school one day a week (from 9:00 AM to 12:30 PM)
- Available as alternate workday once a month
- Attend 7 out of 9 monthly meeting per school year
- Hold a Board Position or serve on a committee
- Assist with fundraising
- Participate in 2 out of 4 maintenance days annually
- Provide snack, play dough and laundering for one week per year

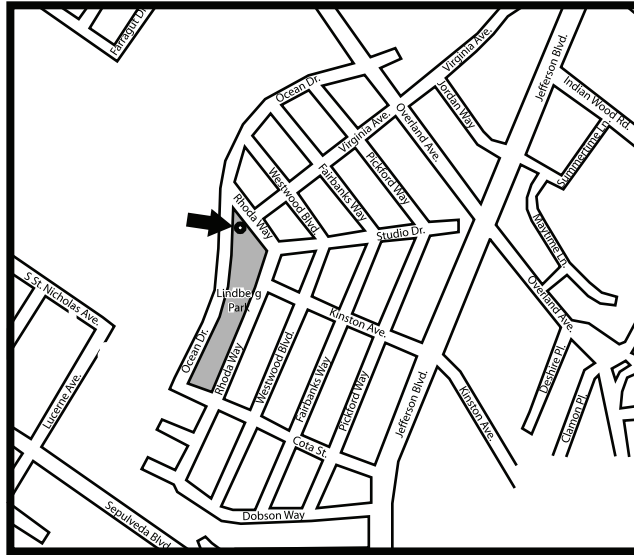


*"At La Playa we all learn and grow as children, parents and educators!"*

**Marni Parsons, Co-Director**

## La Playa Facts

- 9:30 AM - 12:30 PM daily
- Developmentally appropriate program
- Focus on social and emotional development
- Affordable tuition
- High adult to child ratio
- Spacious Indoor facility with large walled in yard
- Plenty of child-directed free play
- Children in diapers accepted
- Member of **Los Angeles Council of Parent Participating Nursery Schools (LACPPNS)**



*La Playa Nursery School admits students of any race, color, national and ethnic origin to all the rights, privileges, programs, and activities generally accorded or made available to students at the school. It does not discriminate on the basis of race, color, national and ethnic origin in administration of its educational policies, admissions policies, scholarship and loan programs, and athletic and other school-administered programs.*



5041 Rhoda Way  
Culver City, CA 90230  
Phone: 310-839-1579

Mailing address:  
P.O. Box 3464  
Culver City, CA 90230

Web: <http://laplayacooperative.com>  
Email: [info@laplayacooperative.com](mailto:info@laplayacooperative.com)

A Non-Profit 501 ( c ) ( 3 ) corporation  
D.S.S. Facility # 191600388

**Be  
involved  
in  
your  
child's  
first  
school  
experience**